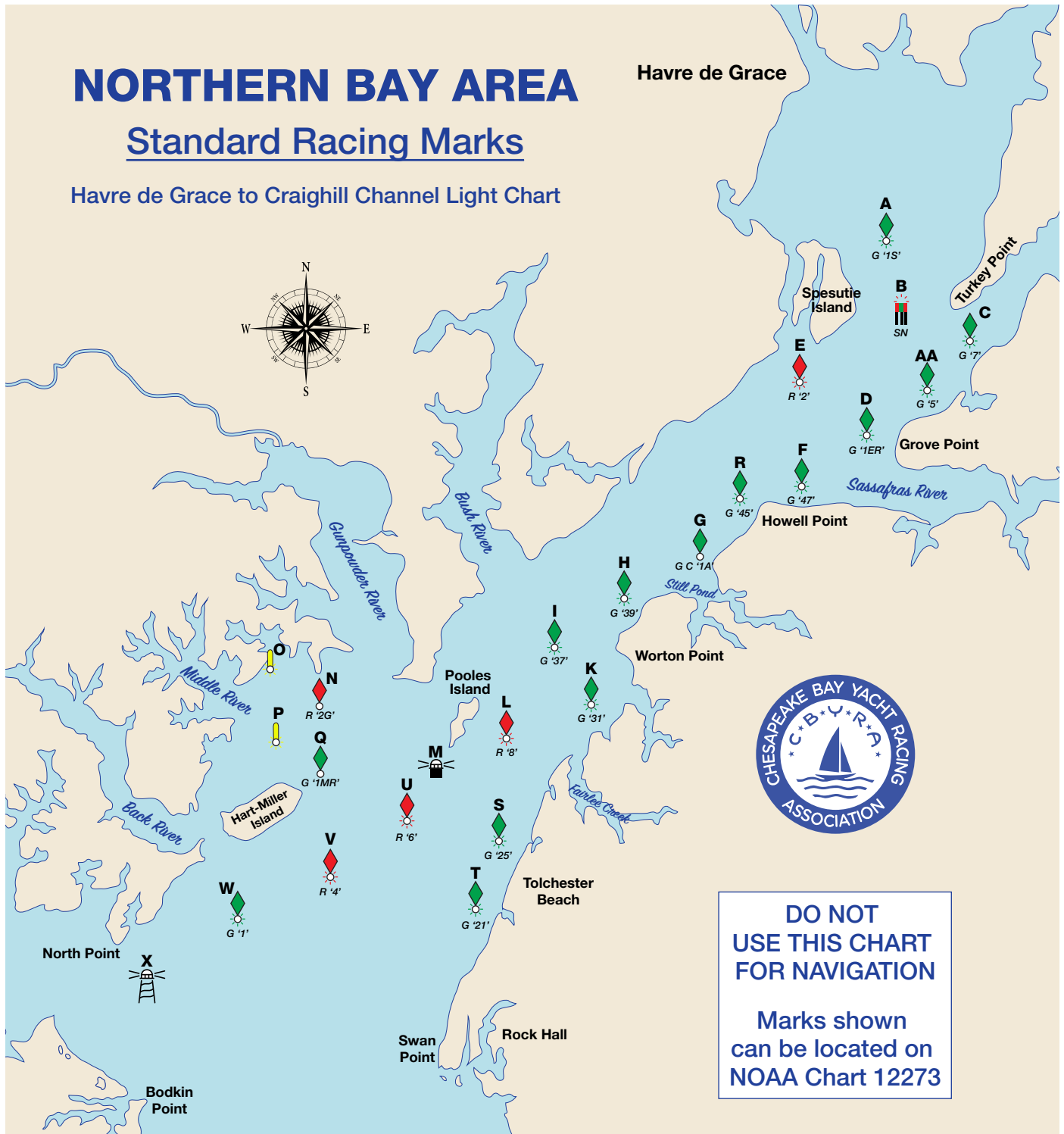


# NORTHERN BAY AREA

## Standard Racing Marks

Havre de Grace to Craighill Channel Light Chart



The above marks are shown on Chart 12273, Chesapeake Bay, Sandy Point to Susquehanna River. Description and location of bouys have been updated through 01/1/2026. The approximate position is offered as a reference only. Government symbols and/or numbers may be changed. All changes are published in Notice to Mariners. While racing, yachts are prohibited from using the channel on the West side of Poole’s Island. Note: Race Committees are cautioned to avoid selecting courses that cross shoal areas that prejudice deeper draft yachts.

**ALERT! Rocky shoals not shown on NOAA charts have been reported close to Marks M and X.**

# Northern Bay Area – Standard Racing Marks

| Mark  | Govt. ID   | Characteristics | Location  | Lat 39 N | Lon 76 W |
|-------|------------|-----------------|---|----------|----------|
| A     | G "1S"     | FI G 2.5s       | Susquehanna River - Lighted Buoy 1S                   | 27.78    | 2.87     |
| AA    | G "5"      | FI G 4s         | Elk River Channel - Lighted Buoy 5                    | 25.07    | 1.71     |
| B     | RGR "SN"   | FI (2+1)R 6s    | Susquehanna River - Junction Light SN                 | 26.65    | 2.13     |
| C     | G "7"      |                 | Elk River Channel - Lighted Buoy 7                    | 26.05    | 0.56     |
| D     | G "1ER"    | FI G 2.5s       | Elk River Channel - Lighted Buoy 1ER                  | 23.85    | 3.28     |
| E     | R "2"      | FI R 2.5s       | Aberden Proving Ground Channel - Lighted Buoy 2       | 25.01    | 5.77     |
| F     | G "47"     | FI G 4s         | Upper Chesapeake Channel - Lighted Buoy 47            | 22.85    | 6.17     |
| G     | G C "1A "  |                 | Upper Chesapeake Channel - Shad Battery Shoal Buoy 1A | 21.54    | 9.79     |
| H     | G "39"     | FI G 4s         | Upper Chesapeake Channel - Lighted Buoy 39            | 20.05    | 11.57    |
| I     | G "37"     | Q G             | Upper Chesapeake Channel - Lighted Buoy 37            | 18.93    | 13.12    |
| K     | G "31"     | FI G 4s         | Upper Chesapeake Channel - Lighted Buoy 31            | 16.77    | 13.91    |
| L     | R "8 "     | Q R             | Pooles Island Flats Channel - Lighted Buoy 8          | 16.66    | 15.06    |
| M     |            | FI W 2.5s, 27ft | Pooles Island Bar Light                               | 15.71    | 16.68    |
| N     | R "2G"     | FI R 4s         | Gunpower River - Lighted Buoy 2G                      | 17.26    | 20.22    |
| O     | GSA Mark N | FI Y 4s         | Glenmar Lighted Race Buoy N                           | 17.91    | 21.84    |
| P     | GSA Mark S | FI Y 4s         | Glenmar Lighted Race Buoy S                           | 16.92    | 21.56    |
| Q     | G "1 MR"   | Q G             | Middle River - Lighted Buoy 1MR                       | 16.36    | 20.18    |
| R     | G "45"     | FI G 2.5s       | Upper Chesapeake Channel - Lighted Buoy 45            | 22.18    | 7.76     |
| S     | G "25"     | FI G 2.5s       | Upper Chesapeake Channel - Lighted Buoy 25            | 14.10    | 14.43    |
| T     | G "21"     | FI G 2.5s       | Upper Chesapeake Channel - Lighted Buoy 21            | 12.62    | 15.28    |
| U     | R "6"      | FI R 4s         | Pooles Island Flats Channel - Lighted Buoy 6          | 14.76    | 17.80    |
| V     | R "4"      | FI R 6s         | Pooles Island Flats Channel - Lighted Buoy 4          | 13.89    | 19.35    |
| W     | G "1"      | FI G 4s         | Pooles Island Flats Channel - Lighted Buoy 1          | 13.14    | 22.01    |
| X     |            | FI W 2.5s, 22ft | Craighill Channel Front Range Light                   | 11.32    | 23.66    |
| Y & Z | RC Choice  | Inflatable Drop | May be set by RC as startingline & mark of course     |          |          |

## Distance Between Marks

Use the table below to determine the distance in nautical miles between marks.

|          | AA   | B    | D    | F    | G    | H    | I     | L     | M     | N    | P    | Q    | R    | T    | U    | V    | W    | X     |
|----------|------|------|------|------|------|------|-------|-------|-------|------|------|------|------|------|------|------|------|-------|
| <b>A</b> | 2.86 | 1.27 | 3.95 |      |      |      |       |       |       |      |      |      |      |      |      |      |      |       |
| <b>B</b> | 1.61 |      | 2.94 | 4.92 | 7.82 | 9.84 | 11.49 | 14.14 | 15.70 |      |      |      | 6.24 |      |      |      |      |       |
| <b>D</b> | 1.72 |      |      | 2.45 | 5.54 |      |       |       |       |      |      |      | 3.85 |      |      |      |      |       |
| <b>E</b> | 3.14 | 3.26 | 2.25 | 2.18 | 4.66 | 6.69 | 8.33  | 11.02 | 12.57 |      |      |      | 3.22 |      |      |      |      |       |
| <b>F</b> | 4.10 |      |      |      | 3.09 | 5.03 | 6.66  | 9.26  | 10.83 |      |      |      | 1.40 |      |      |      |      |       |
| <b>G</b> | 7.18 |      |      |      |      | 2.03 | 3.67  | 6.36  | 7.91  |      |      |      | 1.70 | 9.92 |      |      |      |       |
| <b>H</b> |      |      |      |      |      |      | 1.64  | 4.34  | 5.88  |      |      |      |      | 7.98 | 7.16 | 8.62 |      |       |
| <b>I</b> |      |      |      |      |      |      |       | 2.72  | 4.24  |      |      |      |      | 6.53 | 5.53 |      |      | 11.17 |
| <b>K</b> |      |      |      |      | 5.75 | 3.75 | 2.25  | 0.9   | 2.39  |      |      |      |      | 4.29 | 3.62 | 5.11 | 7.25 | 9.32  |
| <b>L</b> |      |      |      |      |      |      |       |       | 1.57  |      |      |      |      | 4.05 | 2.85 | 4.33 | 6.44 | 8.54  |
| <b>M</b> |      |      |      |      |      |      |       |       |       |      | 3.97 | 2.79 |      | 3.28 | 1.29 | 2.76 | 4.87 | 6.97  |
| <b>N</b> |      |      |      |      |      |      |       |       | 3.15  |      | 1.09 | 0.90 |      | 6.02 | 3.13 | 3.44 |      |       |
| <b>O</b> |      |      |      |      |      |      |       |       | 4.56  | 1.42 | 1.01 | 2.01 |      | 7.34 | 4.44 | 4.46 |      |       |
| <b>Q</b> |      |      |      |      |      |      |       |       |       |      | 1.21 |      |      | 5.33 | 2.44 | 2.55 |      |       |
| <b>S</b> |      |      |      |      |      |      |       |       |       |      | 6.20 |      |      | 1.62 | 2.69 | 3.82 | 5.95 | 7.68  |
| <b>T</b> |      |      |      |      |      |      |       |       |       |      | 6.50 |      |      |      | 2.90 | 3.40 | 5.24 | 6.63  |
| <b>U</b> |      |      |      |      |      |      |       |       |       |      | 3.63 |      |      |      |      | 1.48 | 3.64 | 5.70  |
| <b>V</b> |      |      |      |      |      |      |       |       |       |      |      |      |      |      |      |      | 2.19 | 4.22  |
| <b>W</b> |      |      |      |      |      |      |       |       |       |      |      |      |      |      |      |      |      | 2.23  |